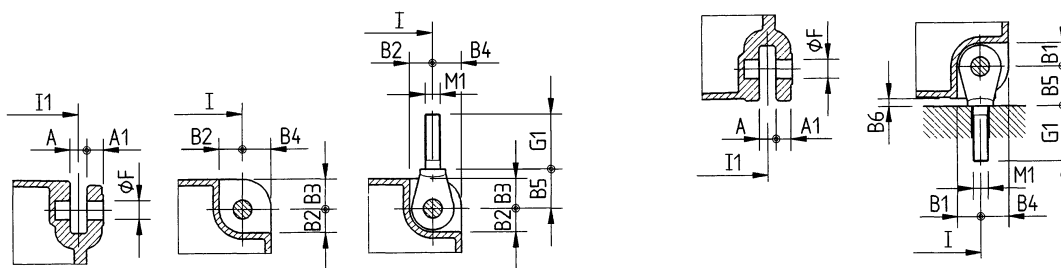


▪ Refer to page 10 for flange range B and headroom E dimension.

Eye Bolt and Attachment Point Dimensions
For Deck/Base Mounted or Lug Suspended Hoists

Capacity (Tons)	Product Code	A (in)	A1 (in)	B1 (in)	B2 (in)	B3 (in)	B4 (in)	B5 (in)	ØF (mm)	G1 (in)	M1 (mm x pitch)
2	RH02D-20①4C-②	0.79	0.79	0.83	0.83	1.38	1.38	1.85	20	2.64	M16x2.0
	RH02D-29①4C-②										
	RH02D-20①4D-②										
	RH02D-29①4D-②										
	RH02D-39①3A-②										
RH02D-79①3A-②											
3	RH03D-20①4C-②	0.79	0.79	0.83	0.83	1.38	1.38	1.85	20	2.64	M16x2.0
	RH03D-29①4C-②										
	RH03D-23①4H-②										
	RH03D-33①4H-②										
	RH03D-46①3E-②										
RH03D-85①3E-②											
5	RH05D-23①4G-②	0.87	0.87	1.22	1.22	1.57	1.57	2.05	25	2.87	M20x2.5
	RH05D-33①4G-②	1.26	1.26	1.42	1.42	2.17	2.17	2.83	35	3.82	M24x3.0
	RH05D-23①4M-②										
	RH05D-33①4M-②	1.65	1.65	1.50	1.81	2.76	2.76	3.35	45	4.41	M30x3.5
	RH05D-46①4J-②										
	RH05D-92①4J-②										
RH05D-52①4P-②											
RH05D-X5①4P-②											
7 1/2	RH08D-23①4L-②	1.26	1.26	1.42	1.42	2.17	2.17	2.83	35	3.82	M24x3.0
	RH08D-33①4L-②										
	RH08D-23①3M-②	1.65	1.65	1.50	1.81	2.76	2.76	3.35	45	4.41	M30x3.5
	RH08D-33①3M-②										
	RH08D-52①4N-②										
RH08D-X5①4N-②											
10	RH10D-23①4L-②	1.26	1.26	1.42	1.42	2.17	2.17	2.83	35	3.82	M24x3.0
	RH10D-33①4L-②	1.65	1.65	1.50	1.81	2.76	2.76	3.35	45	4.41	M30x3.5
	RH10D-26①4R-②										
	RH10D-36①4R-②	1.65	1.65	1.50	1.81	2.76	2.76	3.35	45	4.41	M30x3.5
	RH10D-52①3N-②										
RH10D-X5①3N-②											
15	RH15D-26①4Q-②	1.65	1.65	1.50	1.81	2.76	2.76	3.35	45	4.41	M30x3.5
	RH15D-36①4Q-②										
20	RH20D-26①3Q-②	1.65	1.65	1.50	1.81	2.76	2.76	3.35	45	4.41	M30x3.5
	RH20D-36①3Q-②										

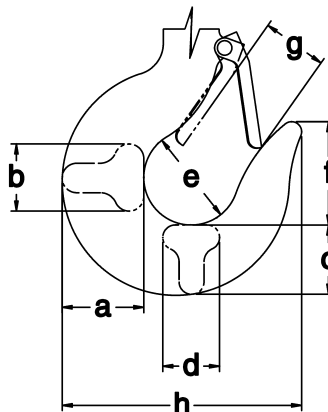


Note:

- Eye bolts are suitable for deck/base mounted or lug suspended applications.
- Eye bolt kits include four eyebolts and all necessary hardware.
- See page 5 for dimensions I and I1.

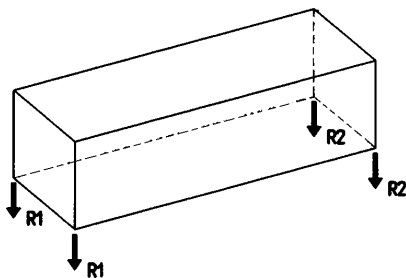
Bottom Hook Dimensions

Capacity (Tons)	Product Code	a (in)	b (in)	c (in)	d (in)	e (in)	f (in)	g (in)	h (in)
2	RH02D-20①4C-②	2.2	1.8	1.9	1.5	2.2	2.5	1.5	5.7
	RH02D-29①4C-②								
	RH02D-20①4D-②								
	RH02D-29①4D-②								
	RH02D-39①3A-②	1.7	1.4	1.5	1.1	1.9	2.1	1.3	4.7
	RH02D-79①3A-②								
3	RH03D-20①4C-②	2.2	1.8	1.9	1.5	2.2	2.5	1.5	5.7
	RH03D-29①4C-②								
	RH03D-23①4H-②	2.6	2.1	2.3	1.8	2.5	2.8	1.7	6.7
	RH03D-33①4H-②								
	RH03D-46①3E-②	2.2	1.8	1.9	1.5	2.2	2.5	1.5	5.7
	RH03D-85①3E-②								
5	RH05D-23①4G-②	2.6	2.1	2.3	1.8	2.5	2.8	1.7	6.7
	RH05D-33①4G-②								
	RH05D-23①4M-②	3.5	2.8	3.0	2.4	3.1	3.5	2.0	8.9
	RH05D-33①4M-②								
	RH05D-46①4J-②	2.6	2.1	2.3	1.8	2.5	2.8	1.7	6.7
	RH05D-92①4J-②								
	RH05D-52①4P-②	3.5	2.8	3.0	2.4	3.1	3.5	2.0	8.9
	RH05D-X5①4P-②								
7 1/2	RH08D-23①4L-②	3.5	2.8	3.0	2.4	3.1	3.5	2.0	8.9
	RH08D-33①4L-②								
	RH08D-23①3M-②								
	RH08D-33①3M-②								
	RH08D-52①4N-②								
	RH08D-X5①4N-②								
10	RH10D-23①4L-②	3.5	2.8	3.0	2.4	3.1	3.5	2.0	8.9
	RH10D-33①4L-②								
	RH10D-26①4R-②	4.9	3.9	4.2	3.3	4.4	5.0	3.0	12.7
	RH10D-36①4R-②								
	RH10D-52①3N-②	3.5	2.8	3.0	2.4	3.1	3.5	2.0	8.9
	RH10D-X5①3N-②								
15	RH15D-26①4Q-②	4.9	3.9	4.2	3.3	4.4	5.0	3.0	12.7
	RH15D-36①4Q-②								
20	RH20D-26①3Q-②	4.9	3.9	4.2	3.3	4.4	5.0	3.0	12.7
	RH20D-36①3Q-②								

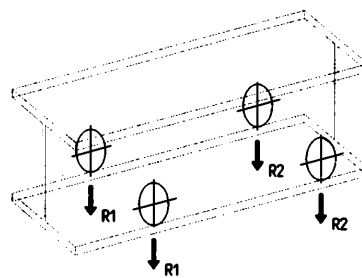


Reaction Forces at Rated Load

Capacity (Tons)	Deck/Base Mounted or Lug Suspended Attachment Point Reaction Forces			Standard Headroom Trolley Reaction Forces			Wheel	Ultra- Low Headroom Trolley Reaction Forces			Wheel
	Product Code	R1 (lbs)	R2 (lbs)	Product Code	R1 (lbs)	R2 (lbs)		Product Code	R1 (lbs)	R2 (lbs)	
2	RH02D-20①4C-②	1483	683	RH02S-20①4C-②-③	1600	665		RH02U-20①4C-②-③	1659	694	
	RH02D-29①4C-②	1734	454	RH02S-29①4C-②-③	1826	461		RH02U-29①4C-②-③	1887	487	
	RH02D-20①4D-②	1483	683	RH02S-20①4D-②-③	1600	665		RH02U-20①4D-②-③	1659	694	
	RH02D-29①4D-②	1734	454	RH02S-29①4D-②-③	1826	461		RH02U-29①4D-②-③	1887	487	
	RH02D-39①3A-②	1758	398	RH02S-39①3A-②-③	1854	401		RH02U-39①3A-②-③	1931	411	
	RH02D-79①3A-②	1928	248	RH02S-79①3A-②-③	2025	250		RH02U-79①3A-②-③	2104	259	
3	RH03D-20①4C-②	2183	983	RH03S-20①4C-②-③	2334	931		RH03U-20①4C-②-③	2400	953	
	RH03D-29①4C-②	2554	634	RH03S-29①4C-②-③	2667	620		RH03U-29①4C-②-③	2737	637	
	RH03D-23①4H-②	2213	1013	RH03S-23①4H-②-③	2297	1067		RH03U-23①4H-②-③	2405	1113	
	RH03D-33①4H-②	2589	669	RH03S-33①4H-②-③	2650	747		RH03U-33①4H-②-③	2760	791	
	RH03D-46①3E-②	5627	587	RH03S-46①3E-②-③	2652	656		RH03U-46①3E-②-③	2881	565	
	RH03D-85①3E-②	2878	358	RH03S-85①3E-②-③	2896	440		RH03U-85①3E-②-③	3105	369	
5	RH05D-23①4G-②	3613	1613	RH05S-23①4G-②-③	3707	1657		RH05U-23①4G-②-③	3836	1682	
	RH05D-33①4G-②	4229	1029	RH05S-33①4G-②-③	4284	1112		RH05U-33①4G-②-③	4417	1135	
	RH05D-23①4M-②	3798	1798	RH05S-23①4M-②-③	4004	1954		RH05U-23①4M-②-③	4233	2079	
	RH05D-33①4M-②	4444	1244	RH05S-33①4M-②-③	4607	1435		RH05U-33①4M-②-③	4844	1562	
	RH05D-46①4J-②	4470	1070	RH05S-46①4J-②-③	4671	1017		RH05U-46①4J-②-③	4929	1079	
	RH05D-92①4J-②	4911	711	RH05S-92①4J-②-③	5102	670		RH05U-92①4J-②-③	5345	745	
	RH05D-52①4P-②	4690	1290	RH05S-52①4P-②-③	4937	1407		RH05U-52①4P-②-③	5345	1589	
	RH05D-X5①4P-②	5157	957	RH05S-X5①4P-②-③	5418	1058		RH05U-X5①4P-②-③	5861	1261	
7.5	RH08D-23①4L-②	5548	2548	RH08S-23①4L-②-③	5767	2692		RH08U-23①4L-②-③	6022	2791	
	RH08D-33①4L-②	6494	1694	RH08S-33①4L-②-③	6650	1892		RH08U-33①4L-②-③	6915	1992	
	RH08D-23①3M-②	5548	2548	RH08S-23①3M-②-③	5767	2692		RH08U-23①3M-②-③	6022	2791	
	RH08D-33①3M-②	6494	1694	RH08S-33①3M-②-③	6650	1892		RH08U-33①3M-②-③	6915	1992	
	RH08D-52①4N-②	6790	1690	RH08S-52①4N-②-③	7070	1910		RH08U-52①4N-②-③	7534	1900	
	RH08D-X5①4N-②	7457	1157	RH08S-X5①4N-②-③	7758	1218		RH08U-X5①4N-②-③	8261	1361	
10	RH10D-23①4L-②	7298	3298	RH10S-23①4L-②-③	7529	3429		RH10U-23①4L-②-③	7810	3502	
	RH10D-33①4L-②	8544	2144	RH10S-33①4L-②-③	8693	2349		RH10U-33①4L-②-③	8985	2421	
	RH10D-26①4R-②	7551	3551	RH10S-26①4R-②-③	7666	4010		RH10U-26①4R-②-③	8132	4220	
	RH10D-36①4R-②	8828	2428	RH10S-36①4R-②-③	9147	2683		RH10U-36①4R-②-③	9666	2918	
	RH10D-52①3N-②	8890	2090	RH10S-52①3N-②-③	9202	2412		RH10U-52①3N-②-③	9723	2211	
	RH10D-X5①3N-②	9757	1357	RH10S-X5①3N-②-③	10098	1378		RH10U-X5①3N-②-③	10661	1461	
15	RH15D-26①4Q-②	11051	5051	RH15S-26①4Q-②-③	11080	5596		RH15U-26①4Q-②-③	11610	5742	
	RH15D-36①4Q-②	12928	3328	RH15S-36①4Q-②-③	13263	3567		RH15U-36①4Q-②-③	13853	3731	
20	RH20D-26①3Q-②	14551	6551	RH20S-26①3Q-②-③	14494	7182		RH20U-26①3Q-②-③	15088	7264	
	RH20D-36①3Q-②	17028	4228	RH20S-36①3Q-②-③	17379	4451		RH20U-36①3Q-②-③	18040	4544	



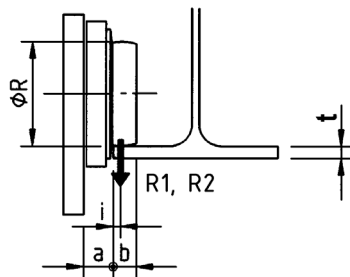
Deck/Base Mounted or Lug Suspended Hoists



Standard or Ultra-Low Headroom Trolley Hoist

Trolley Wheel Dimensions

Capacity (Tons)	Product Code		a (in)	b (in)	i (in)	Wheel Dia. Ø R (in)	Maximum Flange Thickness t (in)
	Standard Headroom	Ultra-Low Headroom					
2	RH02S-20①4C-②-③	RH02U-20①4C-②-③	1.38	0.71	0.31	3.94	0.79
	RH02S-29①4C-②-③	RH02U-29①4C-②-③					
	RH02S-20①4D-②-③	RH02U-20①4D-②-③					
	RH02S-29①4D-②-③	RH02U-29①4D-②-③					
	RH02S-39①3A-②-③	RH02U-39①3A-②-③					
RH02S-79①3A-②-③	RH02U-79①3A-②-③						
3	RH03S-20①4C-②-③	RH03U-20①4C-②-③	1.38	0.71	0.31	3.94	0.79
	RH03S-29①4C-②-③	RH03U-29①4C-②-③					
	RH03S-23①4H-②-③	RH03U-23①4H-②-③	1.38	1.14	0.47	4.92	0.91
	RH03S-33①4H-②-③	RH03U-33①4H-②-③					
	RH03S-46①3E-②-③	RH03U-46①3E-②-③	1.38	0.71	0.31	3.94	0.79
RH03S-85①3E-②-③	RH03U-85①3E-②-③						
5	RH05S-23①4G-②-③	RH05U-23①4G-②-③	1.38	1.14	0.47	4.92	0.91
	RH05S-33①4G-②-③	RH05U-33①4G-②-③					
	RH05S-23①4M-②-③	RH05U-23①4M-②-③	1.77	1.50	0.75	7.87	1.50
	RH05S-33①4M-②-③	RH05U-33①4M-②-③					
	RH05S-46①4J-②-③	RH05U-46①4J-②-③	1.38	1.14	0.47	4.92	0.91
	RH05S-92①4J-②-③	RH05U-92①4J-②-③					
	RH05S-52①4P-②-③	RH05U-52①4P-②-③	1.77	1.50	0.75	7.87	1.50
RH05S-X5①4P-②-③	RH05U-X5①4P-②-③						
7 1/2	RH08S-23①4L-②-③	RH08U-23①4L-②-③	1.77	1.50	0.75	7.87	1.50
	RH08S-33①4L-②-③	RH08U-33①4L-②-③					
	RH08S-23①3M-②-③	RH08U-23①3M-②-③					
	RH08S-33①3M-②-③	RH08U-33①3M-②-③					
	RH08S-52①4N-②-③	RH08U-52①4N-②-③					
RH08S-X5①4N-②-③	RH08U-X5①4N-②-③						
10	RH10S-23①4L-②-③	RH10U-23①4L-②-③	1.77	1.50	0.75	7.87	1.50
	RH10S-33①4L-②-③	RH10U-33①4L-②-③					
	RH10S-26①4R-②-③	RH10U-26①4R-②-③	1.97	1.69	0.87	9.84	1.69
	RH10S-36①4R-②-③	RH10U-36①4R-②-③					
	RH10S-52①3N-②-③	RH10U-52①3N-②-③	1.77	1.50	0.75	7.87	1.50
RH10S-X5①3N-②-③	RH10U-X5①3N-②-③						
15	RH15S-26①4Q-②-③	RH15U-26①4Q-②-③	1.97	1.69	0.87	9.84	1.69
	RH15S-36①4Q-②-③	RH15U-36①4Q-②-③					
20	RH20S-26①3Q-②-③	RH20U-26①3Q-②-③	1.97	1.69	0.87	9.84	1.69
	RH20S-36①3Q-②-③	RH20U-36①3Q-②-③					



Note:
 ▪ See page 14 for reaction forces R1 and R2.