



**GT GEARED TROLLEY
MODELS TF2 & T3
SPECIFICATIONS**

Purpose

To provide dimension and specification information for the GT TROLLEY.

Attachments

Pg. No. 2	Imperial Data Chart	GT TROLLEY
Pg. No. 2	Metric Data Chart	GT TROLLEY
Pg. No. 3	Line Drawing	GT TROLLEY

GT TROLLEY
Imperial Dimensions & Specifications

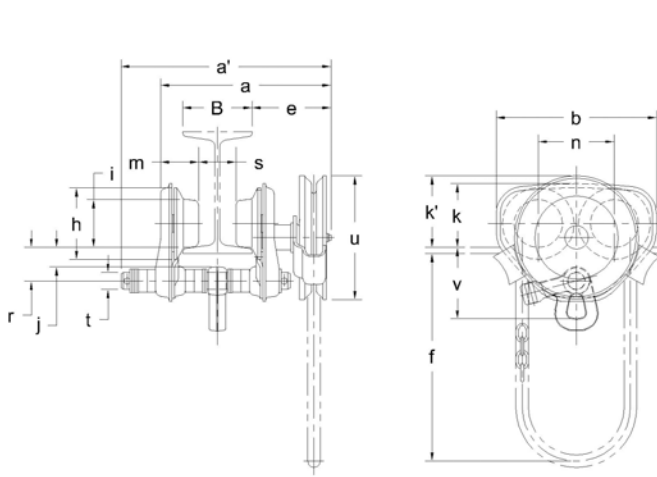
Cap. (Tons)	Product Code	Min. Radius for Curve (in)	Flange Width Adjustability B (in)		a max (in)	a' (in)	b (in)	e (in)	f* (ft.)	h (in)	i (in)	j (in)	k (in)	k' (in)	m (in)	n (in)	r (in)	s (in)	t (in)	u (in)	v (in)	Net Weight (lbs)	Shipping Weight Approx. (lbs)
			Standard	Option																			
1/2-1	GTF2010	17.7	2.28 to 5.00	5.01 to 8.00 or 8.01 to 12.00	10.8	13.2	9.3	4.6	8	4.2	2.80	1.1	3.7	4.2	2.2	4.4	2.0	B-1.9	0.98	7.2	4.5	24	25
1 1/2-2	GTF2020	21.7	3.23 to 6.02	6.03 to 12.00	13.7	17.2	11.0	6.1	8	5.0	3.35	1.4	4.4	4.3	2.8	5.2	2.4	B-2.3	1.26	7.2	5.6	37	39
2 1/2-3	GTF2030	25.6		6.03 to 12.00	14.1	17.7	12.8	6.2	8	5.8	3.94	1.4	5.3	4.5	3.1	6.0	2.7	B-2.3	1.42	7.2	6.4	55	57
5	GTF2050	78.7	4.92 to 7.02	7.03 to 12.00	14.8	17.0	13.7	6.2	8	6.7	4.65	-	4.4	5.7	3.2	7.0	4.6	B-3.0	1.73	7.2	3.7	104	107
8	GT080	118.1	5.50 to 8.66	8.67 to 12.00	17.4	20.6	18.9	7.0	12	7.3	6.10	-	6.7	6.5	4.7	7.7	6.0	B-3.6	2.76	8.4	4.6	218	260
10	GT100	118.1		8.67 to 12.00	17.4	20.6	18.9	7.0	12	7.3	6.10	-	6.7	6.5	4.7	7.7	6.0	B-3.6	2.76	8.4	4.6	218	260
15	GT150	∞		8.67 to 12.00	22.7	21.3	39.8	7.0	12	7.3	6.10	-	6.7	6.5	8.9	28.2	8.0	B-3.6	3.15	8.4	6.3	534	615
20	GT200	∞		8.67 to 12.00	22.7	21.3	39.8	7.0	12	7.3	6.10	-	6.7	6.5	8.9	28.2	8.0	B-3.6	3.15	8.4	6.3	534	615

*Longer hand chain drops available upon request.

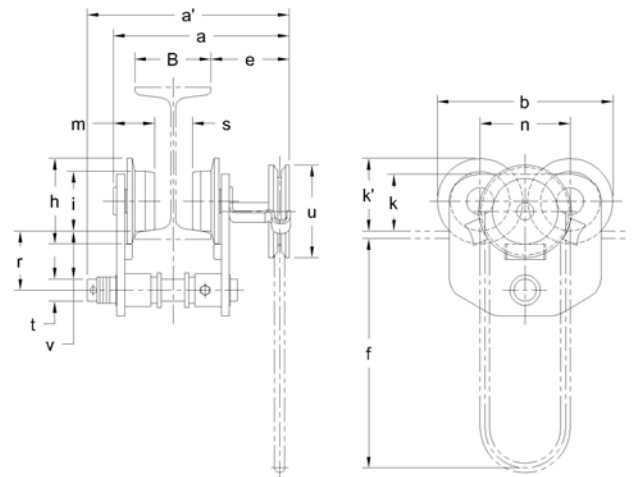
GT TROLLEY
Metric Dimensions & Specifications

Cap. (Tons)	Product Code	Min. Radius for Curve (mm)	Flange Width Adjustability B (mm)		a max (mm)	a' (mm)	b (mm)	e (mm)	f* (m)	h (mm)	i (mm)	j (mm)	k (mm)	k' (mm)	m (mm)	n (mm)	r (mm)	s (mm)	t (mm)	u (mm)	v (mm)	Net Wt. (kg)	Ship Wt. Appx. (kg)
			Std.	Option																			
1/2-1	GTF2010	450	58 to 127	127 to 203 or 203 to 305	275	336	236	116	2.4	106	71	29	95	106	56	112	50	B-47	25	183	115	11	11.4
1 1/2-2	GTF2020	550	82 to 153	153 to 305	349	438	280	154	2.4	127	85	35	112	109	71	131	62	B-57	32	183	142	17	17.8
2 1/2-3	GTF2030	650		153 to 305	359	451	324	157	2.4	148	100	36	134	114	80	152	68	B-59	36	183	163	25	26.0
5	GTF2050	2000	125 to 178	179 to 305	376	430	347	157	2.4	170	118	-	112	144	81	178	117	B-76	44	183	94	47	48.7
8	GT080	3000	140 to 220	220 to 305	443	523	480	178	3.7	185	155	-	170	165	120	197	153	B-91	70	214	118	99	118.0
10	GT100	3000		220 to 305	443	523	480	178	3.7	185	155	-	170	165	120	197	153	B-91	70	214	118	99	118.0
15	GT150	∞		220 to 305	576	540	1012	178	3.7	185	155	-	170	165	227	717	203	B-91	80	214	161	242	279.0
20	GT200	∞		220 to 305	576	540	1012	178	3.7	185	155	-	170	165	227	717	203	B-91	80	214	161	242	279.0

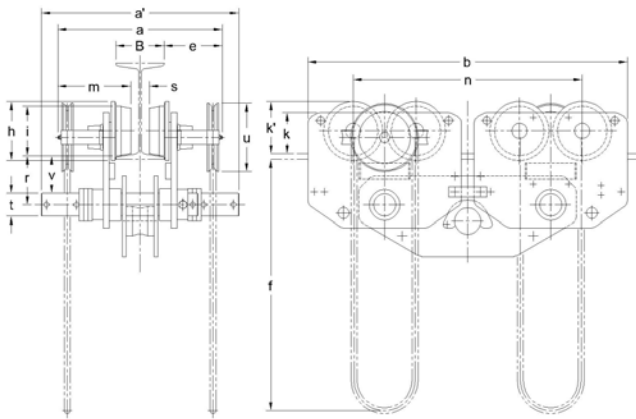
*Longer hand chain drops available upon request.



GTF2010 to GTF2030



GTF2050 to GT100



GT150 to GT200