

**PURPOSE**

To provide dimensional information and specifications for the HPC500 End Trucks.

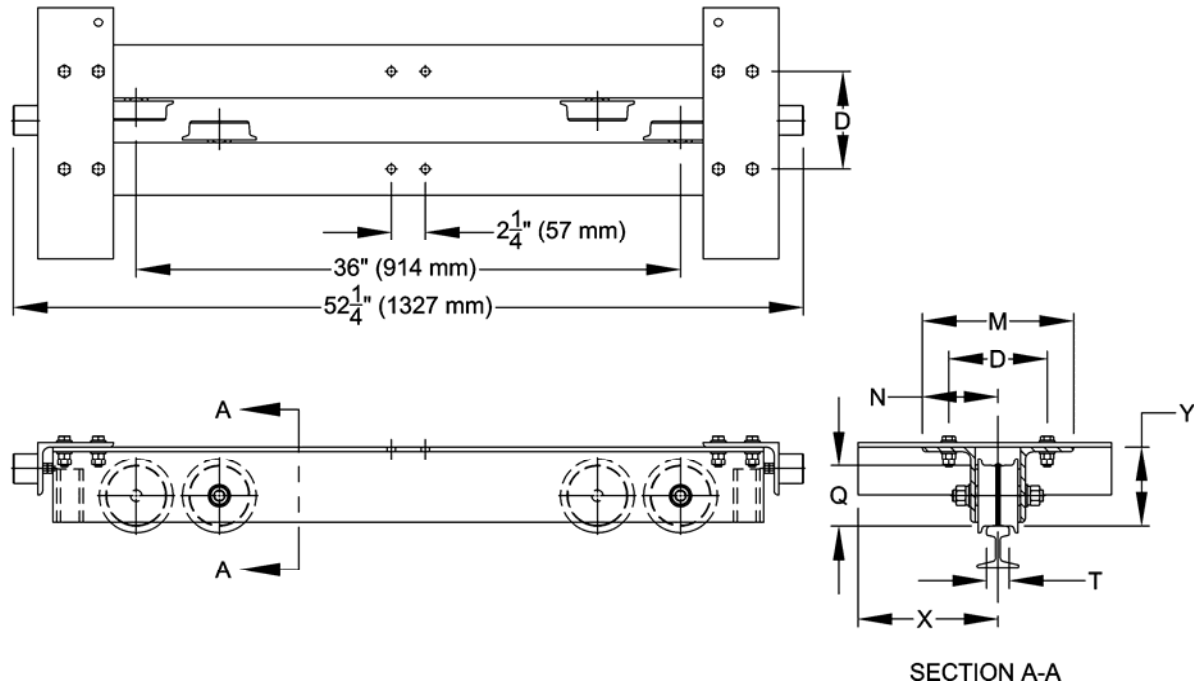
**SCOPE**

Outline drawings and data for the HPC505, HPC510, and HPC520 in the Top Running and Underhung configurations.

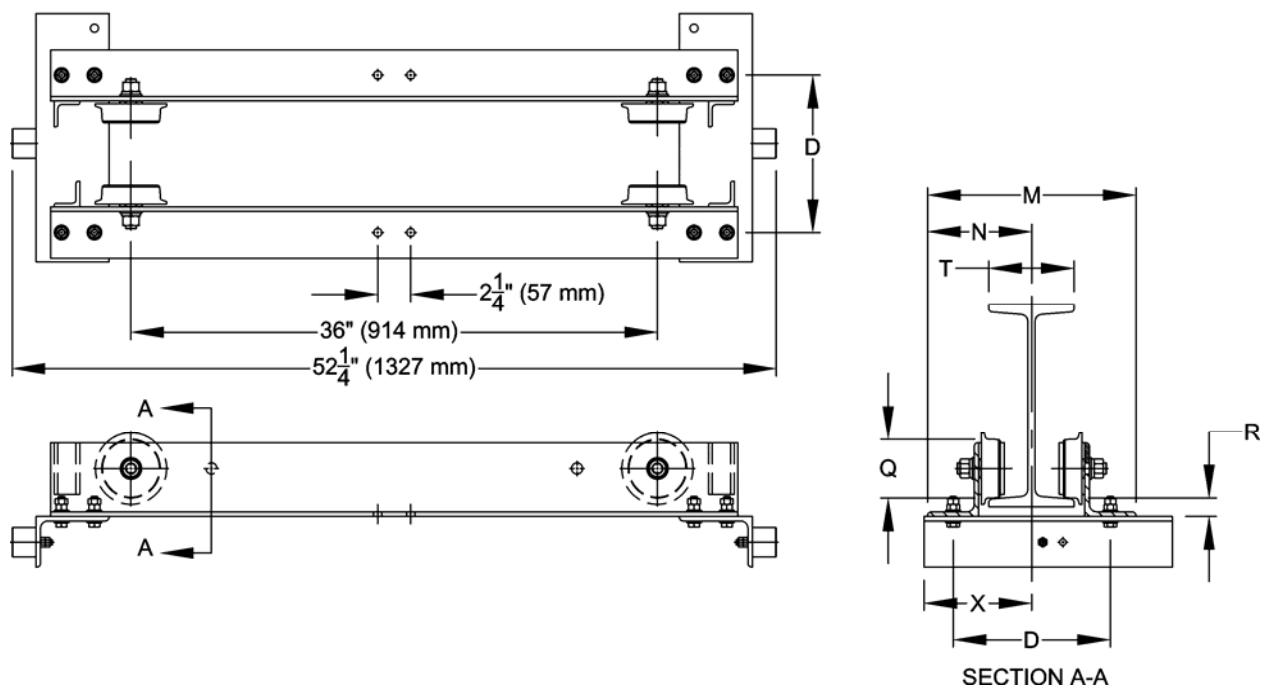
**TABLE OF CONTENTS**

<u>Page</u>	<u>Type</u>	<u>Description</u>
2	Line Drawing	HPC500 Series Top Running End Truck
2	Line Drawing	HPC500 Series Underhung End Truck
3	Data Chart	HPC500 End Truck Imperial Dimensions and Specifications
3	Data Chart	HPC500 End Truck Metric Dimensions and Specifications
3	Data Chart	HPC500 Series Recommended Bridge Beams

## HPC500 SERIES TOP RUNNING END TRUCK



## HPC500 SERIES UNDERHUNG END TRUCK



### Imperial Specifications & Dimensions

Cap. (Tons)	Max. Span (ft)	End Truck Product Code	T* Flange or Rail Head Width (in)		D** (in)	M** End Truck Frame Width (in)	N Runway Ctr. Line to Outer Edge of ET (in)	Q Wheel Tread Dia. (in)	X Width Beyond Span (in)	Y Wheel Running Surface to Bridge Beam (in)	R Wheel Running Surface to Bridge Beam (in)	End Truck Weight (lbs/pr)	
			Top Running	Under- hung									
1/2	24	HPC505	1.5 – 6	3 – 6	T + 4 <sup>3/4</sup>	T + 7.3	M/2	3.12	10 <sup>1/8</sup> – (T/2)	4.3	1.2	156	
1		HPC510						4.00					5.3
2		HPC520						4.88					

### Metric Specifications & Dimensions

Cap. (Tons)	Max. Span (m)	End Truck Product Code	T* Flange or Rail Head Width (mm)		D** (mm)	M** End Truck Frame Width (mm)	N Runway Ctr. Line to Outer Edge of ET (mm)	Q Wheel Tread Dia. (mm)	X Width Beyond Span (mm)	Y Wheel Running Surface to Bridge Beam (mm)	R Wheel Running Surface to Bridge Beam (mm)	End Truck Weight (kg/pr)	
			Top Running	Under- hung									
1/2	7.3	HPC505	38 – 152	76 – 152	T + 121	T + 185	M/2	79	257 – (T/2)	109	30	70.8	
1		HPC510						102					135
2		HPC520						124					

\* Consult factory for widths or flanges greater than 6" (152 mm).

\*\* Formula shown is for S beams & ASCE rail. Add 1/4" (6 mm) for W beams and rectangular bar.

RECOMMENDED BRIDGE BEAMS				
<ol style="list-style-type: none"> <li>Includes 15% Allowance for Electric Hoist Load Factor.</li> <li>Based on Harrington's electric chain hoist product.</li> <li>For spans greater than 10 ft (3.0 m), braces between end truck and bridge beam are recommended.</li> </ol>				
Cap. (Tons)	Maximum Allowable Span: ft (m)			
	10 (3.0)	15 (4.6)	20 (6.1)	24 (7.3)
1/2	S8 X 18.4	S8 X 18.4	S8 X 18.4	S10 X 25.4
1	S8 X 18.4	S8 X 18.4	S10 X 25.4	S10 X 25.4
2	S10 X 25.4	S10 X 25.4	S12 X 31.8	S12 X 31.8 C8 X 11.5